

Nucleotides & Nucleic Acids

Multiple Choice

Question Paper 1

Level	A Level
Subject	Biology
Exam Board	OCR
Module	Foundations in Biology
Topic	Nucleotides & Nucleic Acids
Booklet	Question Paper 1

Time allowed: 16 minutes

Score: /12

Percentage: /100

Grade Boundaries:

A*	A	B	C	D	E
>69%	56%	50%	42%	34%	26%

Question 1

DNA polymerase catalyses the formation of phosphodiester bonds during DNA replication.

Which of the statements, **A** to **D**, will **not** affect the rate of phosphodiester bond formation? **[1]**

- A. temperature
- B. length of DNA molecule
- C. pH
- D. free nucleotide availability



Question 2

Which of the following statements, **A** to **D**, about DNA replication is correct?

- A. RNA will bind to DNA through complementary base-pairing.
- B. The distance between the strands in the double helix will always be the same.
- C. The proportion of adenine in a nucleic acid will always equal the proportion of guanine.
- D. The formation of phosphodiester bonds will occur in the same direction on each strand during DNA replication.

[1]



Question 3

During which stage of the cell cycle does semi-conservative DNA replication take place?

- A. first growth phase
- B. prophase
- C. second growth phase
- D. synthesis phase

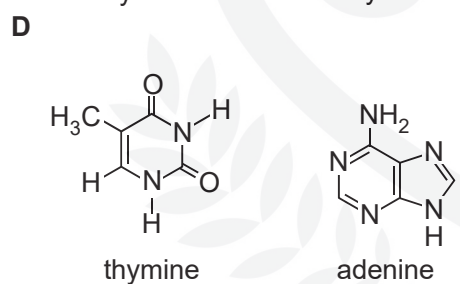
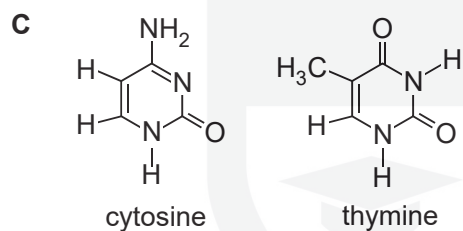
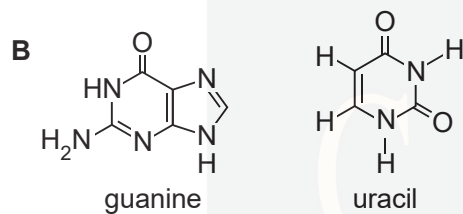
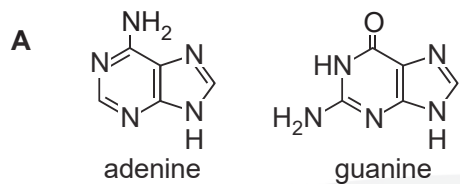
[1]



Question 4

DNA is formed from three main groups of molecules: pentose sugars, phosphate groups and nitrogenous bases. The bases can be divided into purines and pyrimidines.

Identify the two purines below.



[1]

CHEMISTRY ONLINE
— TUITION —

Question 5

A standard method can be used to extract DNA from the nuclei of cells in kiwi fruit.

The statements below list some of the steps involved in this method.

Which statement is **not** correct?

- A. chop the kiwi fruit to break open cell membranes
- B. add detergent to dissolve nuclear membranes
- C. add protease to digest histone proteins
- D. pour ice cold ethanol onto filtrate to precipitate DNA

[1]



Question 6

DNA carries the genetic code which is non-overlapping and degenerate.

Which of the options, **A** to **D**, contains the correct definitions for non-overlapping and degenerate code?

- A. Each nucleotide is only part of one triplet of bases and the molecule breaks down easily.
- B. The genes follow straight after each other and the molecule breaks down easily.
- C. Each nucleotide is only part of one triplet of bases and more than one triplet codes for a specific amino acid.
- D. The genes follow straight after each other and more than one triplet codes for a specific amino acid.

[1]



CHEMISTRY ONLINE
— TUITION —

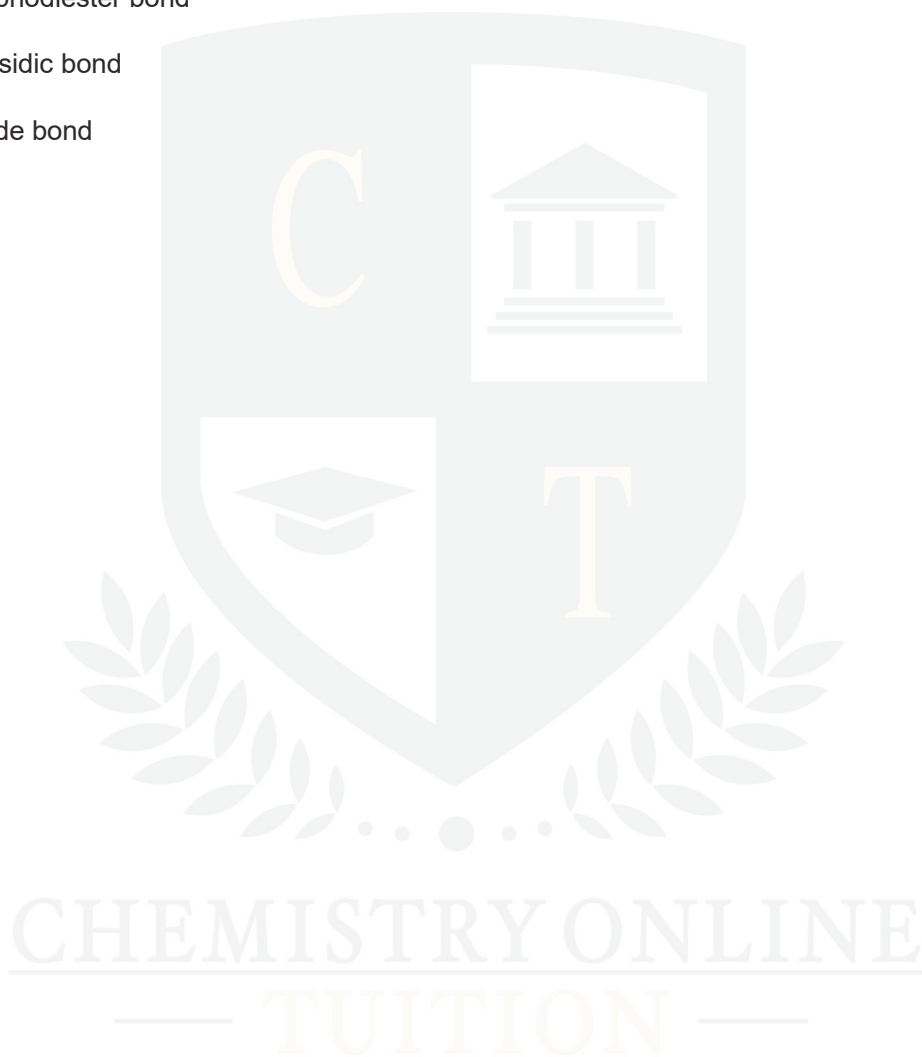
Question 7

During DNA replication, DNA polymerase can only work in one direction – from the 3' end to the 5' end. This means that the lagging strand has small gaps left in the backbone. DNA ligase works to seal these gaps.

Which of the options, **A** to **D**, identifies the bond formed?

- A. hydrogen bond
- B. phosphodiester bond
- C. glycosidic bond
- D. peptide bond

[1]



Question 8

Which of the following processes occur during DNA replication?

- 1 breakage and (re)formation of phosphodiester bonds
- 2 breakage and (re)formation of hydrogen bonds
- 3 alignment of free nucleotides with their complementary bases

- A. 1, 2 and 3
B. Only 1 and 2
C. Only 2 and 3
D. Only 1

[1]



Question 9

Which of the following statements, **A** to **D**, about the nature of the genetic code is **incorrect**?

- A. It is a degenerate code.
- B. It is a triplet code.
- C. It is overlapping.
- D. It is universal.

[1]



Question 10

A length of DNA has the base sequence AATCGCGGTCGCTCA.

Select the row that shows the correct complementary DNA strand and the sequence of mRNA made during transcription of the DNA sequence above.

	Complementary DNA sequence	mRNA sequence
A	AATCGCGGTCGCTCA	UUAGCGCCAGCGAGU
B	TTAGCGCCAGCGAGT	UUAGCGCCAGCGAGU
C	TTAGCGCCAGCGAGT	TTAGCGCCAGCGAGT
D	TTAGCGCCAGCGAGT	AAUCGCGGUCGCUCA

[1]



Question 11

An anticodon sequence of five successive tRNA molecules involved in protein synthesis was analysed and found to have the following percentage base composition.

Adenine 40; Cytosine 27; Guanine 13; Thymine 0; Uracil 20 %

Which row shows the percentage base composition of the template strand of the original DNA molecule?

	Adenine	Cytosine	Guanine	Thymine	Uracil
A	40	27	13	20	0
B	20	13	27	40	0
C	20	13	27	0	40
D	40	27	13	0	20

[1]

CHEMISTRY ONLINE
— TUITION —

Question 12

The following statements are about the structure of DNA.
Which of the following statement(s) is/are true?

Statement 1: Purine bases pair with pyrimidine bases.

Statement 2: Phosphodiester bonds link adjacent nucleotides.

Statement 3: There are always equal amounts of adenine and guanine.

- A** 1, 2 and 3
- B** Only 1 and 2
- C** Only 2 and 3
- D** Only 1

[1]

CHEMISTRY ONLINE
— TUITION —